

Fira Sans

Fira Sans Two
Fira Sans Four
Fira Sans Eight
Fira Sans Hair
Fira Sans Thin
Fira Sans UltraLight
Fira Sans ExtraLight
Fira Sans Light
Fira Sans Book
Fira Sans Regular
Fira Sans Medium
Fira Sans SemiBold
Fira Sans Bold
Fira Sans ExtraBold
Fira Sans Heavy
Fira Sans Ultra
Fira Sans Condensed Two
Fira Sans Condensed Four
Fira Sans Condensed Eight
Fira Sans Condensed Hair
Fira Sans Condensed Thin
Fira Sans Condensed UltraLight
Fira Sans Condensed ExtraLight
Fira Sans Condensed Light
Fira Sans Condensed Book
Fira Sans Condensed Regular
Fira Sans Condensed Medium
Fira Sans Condensed SemiBold
Fira Sans Condensed Bold
Fira Sans Condensed ExtraBold
Fira Sans Condensed Heavy
Fira Sans Compressed Two
Fira Sans Compressed Four
Fira Sans Compressed Eight
Fira Sans Compressed Hair
Fira Sans Compressed Thin
Fira Sans Compressed UltraLight
Fira Sans Compressed ExtraLight
Fira Sans Compressed Light
Fira Sans Compressed Book
Fira Sans Compressed Regular
Fira Sans Compressed Medium
Fira Sans Compressed SemiBold
Fira Sans Compressed Bold
Fira Sans Compressed ExtraBold
Fira Sans Compressed Heavy

OT-Features, Scripts & Languages



Supported Script(s):

Latin
Cyrillic
Greek

59 languages and many more:

Afrikaans, Albanian, Basque, Bosnian, Breton, Bulgarian, Corsican, Croatian, Czech, Danish, Dutch, English, Esperanto, Estonian, Faroese, Finnish, French, Galician, German, Greek, Greenlandic, Hungarian, Icelandic, Indonesian, Irish, Italian, Kurdish, Latvian, Leonese, Lithuanian, Luxembourgish, Malay, Malaysian, Malti, Manx, Norwegian, Occitan, Polish, Portuguese, Rhaeto-Romanic, Romanian, Russian, Sami, Scottish Gaelic, Serbian Latin, Slovak, Slovakian, Slovene, Slovenian, Sorbian (Lower), Sorbian (Upper), Spanish, Swahili, Swedish, Turkish, Turkmen, Ukrainian, Vietnamese, Walloon

Code Pages (this overview can happen to be incomplete)

Mac OS

Mac OS Central European

Mac OS Cyrillic

Mac OS Greek

Mac OS Iceland

Mac OS Romanian

Mac OS Ukrainian

MS Windows

MS Windows 1250 Central European

MS Windows 1251 Cyrillic

MS Windows 1252 Western (ANSI)

MS Windows 1253 Greek

MS Windows 1254 Turkish

MS Windows 1257 Baltic

MS Windows 1258 Vietnamese

ISO 8859

ISO 8859-1 Latin 1 (Western)

ISO 8859-2 Latin 2 (Central Europe)

ISO 8859-3 Latin 3 (Tu, Malt, Gal, Esp)

ISO 8859-4 Latin 4 (Baltic)

ISO 8859-5 Cyrillic

ISO 8859-9 Latin 5 (Turkish)

ISO 8859-15 Latin 9

IPA Extensions

Encoded Glyphs

Basic Latin (0000–007F)													
		!	"	#	\$	%	&	'	()	*	+	,
000D	0020	0021	0022	0023	0024	0025	0026	0027	0028	0029	002A	002B	002C
-	.	/	0	1	2	3	4	5	6	7	8	9	:
002D	002E	002F	0030	0031	0032	0033	0034	0035	0036	0037	0038	0039	003A
;	<	=	>	?	@	A	B	C	D	E	F	G	H
003B	003C	003D	003E	003F	0040	0041	0042	0043	0044	0045	0046	0047	0048
I	J	K	L	M	N	O	P	Q	R	S	T	U	V
0049	004A	004B	004C	004D	004E	004F	0050	0051	0052	0053	0054	0055	0056
W	X	Y	Z	[\]	^	_	`	a	b	c	d
0057	0058	0059	005A	005B	005C	005D	005E	005F	0060	0061	0062	0063	0064
e	f	g	h	i	j	k	l	m	n	o	p	q	r
0065	0066	0067	0068	0069	006A	006B	006C	006D	006E	006F	0070	0071	0072
s	t	u	v	w	x	y	z	{		}	~		
0073	0074	0075	0076	0077	0078	0079	007A	007B	007C	007D	007E		

Encoded Glyphs

Latin-1 Supplement (0080-00FF)													
00A0	00A1	00A2	00A3	00A4	00A5	00A6	00A7	00A8	00A9	00AA	00AB	00AC	00AD
®	¯	◦	±	²	³	´	μ	¶	·	¸	¹	º	»
¼	½	¾	¿	À	Á	Â	Ã	Ä	Å	Æ	Ç	È	É
Ê	Ë	Ì	Í	Î	Ï	Ð	Ñ	Ò	Ó	Ô	Õ	Ö	×
Ø	Ù	Ú	Û	Ü	Ý	Þ	ß	à	á	â	ã	ä	å
æ	ç	è	é	ê	ë	ì	í	î	ï	ð	ñ	ò	ó
ô	õ	ö	÷	ø	ù	ú	û	ü	ý	þ	ÿ		

Encoded Glyphs

Latin Extended-A (0100–017F)																											
Ā	ā	Ă	ă	Ą	ą	Ć	ć	Ĉ	ĉ	Č	č	Č	č	0100	0101	0102	0103	0104	0105	0106	0107	0108	0109	010A	010B	010C	010D
Ď	d'	Đ	đ	Ē	ē	Ě	ě	È	è	Ę	ę	Ě	ě	010E	010F	0110	0111	0112	0113	0114	0115	0116	0117	0118	0119	011A	011B
Ĝ	ĝ	Ğ	ğ	Ġ	ġ	Ģ	ģ	Ĥ	ĥ	Ħ	ħ	Ĩ	ĩ	011C	011D	011E	011F	0120	0121	0122	0123	0124	0125	0126	0127	0128	0129
Ī	ī	Ĳ	ĳ	Ĵ	ĵ	İ	ı	IJ	ij	Ĵ	ĵ	Ɔ	Ɔ	012A	012B	012C	012D	012E	012F	0130	0131	0132	0133	0134	0135	0136	0137
Ɔ	Ć	Ć	Ľ	ł	Ł	ł	Ł	ł	Ł	ł	Ń	ń	Ń	0138	0139	013A	013B	013C	013D	013E	013F	0140	0141	0142	0143	0144	0145
Ń	Ń	ň	ŋ	Ŋ	ŋ	Ō	ō	Ŏ	ö	Ŏ	ö	Œ	œ	0146	0147	0148	0149	014A	014B	014C	014D	014E	014F	0150	0151	0152	0153
Ŕ	ŕ	Ŗ	ŗ	Ř	ř	Ś	ś	Ŝ	ŝ	Ş	ş	Š	š	0154	0155	0156	0157	0158	0159	015A	015B	015C	015D	015E	015F	0160	0161

Encoded Glyphs

Ŧ	ŧ	Ť	ť	Ʀ	Ƨ	Ū	ū	Ū	ū	Ŭ	ŭ	Ů	ů
0162	0163	0164	0165	0166	0167	0168	0169	016A	016B	016C	016D	016E	016F
Ů	ů	Ů	ů	Ŵ	ŵ	Ŷ	ŷ	ÿ	Ž	ž	Ž	ž	Ž
0170	0171	0172	0173	0174	0175	0176	0177	0178	0179	017A	017B	017C	017D
Ž	ƒ												
017E	017F												
Latin Extended-B (0180–024F)													
ƀ	Ɓ	Ƃ	ƃ	Ƅ	ƅ	Ɔ	Ƈ	ƈ	Ɖ	Ɗ	Ƌ	ƌ	ƍ
0180	0181	0182	0183	0184	0185	0186	0187	0188	0189	018A	018B	018C	018D
Ǝ	Ə	Ɛ	Ƒ	ƒ	Ɠ	Ɣ	ƕ	Ɩ	Ɨ	Ƙ	ƙ	ƚ	ƛ
018E	018F	0190	0191	0192	0193	0194	0195	0196	0197	0198	0199	019A	019B
Ƙ	ƞ	Ɵ	Ơ	ơ	Ƣ	ƣ	Ƥ	ƥ	Ʀ	Ƨ	ƨ	Ʃ	ƪ
019C	019D	019E	019F	01A0	01A1	01A2	01A3	01A4	01A5	01A6	01A7	01A8	01A9
ƫ	Ƭ	Ʒ	Ƹ	ƹ	ƺ	ƻ	Ƽ	ƾ	ƿ	ƿ	ƿ	ƿ	ƿ
01AA	01AB	01AC	01AD	01AE	01AF	01B0	01B1	01B2	01B3	01B4	01B5	01B6	01B7

Encoded Glyphs

Σ	ς	ζ	Ϸ	5	5	ƚ	ρ	l	ll	‡	!	DŽ	Dž
01B8	01B9	01BA	01BB	01BC	01BD	01BE	01BF	01C0	01C1	01C2	01C3	01C4	01C5
dž	Lj	Lj	lj	Nj	Nj	nj	Ǻ	ǻ	ǿ	ǿ	Ǿ	ǿ	Ǘ
01C6	01C7	01C8	01C9	01CA	01CB	01CC	01CD	01CE	01CF	01D0	01D1	01D2	01D3
ǘ	Ū	ū	Ú	ú	Ŭ	ŭ	Ù	ù	ə	Ä	ä	Ā	ā
01D4	01D5	01D6	01D7	01D8	01D9	01DA	01DB	01DC	01DD	01DE	01DF	01E0	01E1
Ā	ā	G	g	Ĝ	ĝ	Ķ	ķ	Q	q	Q̄	q̄	Ž	ž
01E2	01E3	01E4	01E5	01E6	01E7	01E8	01E9	01EA	01EB	01EC	01ED	01EE	01EF
ĵ	DZ	Dz	dz	Ġ	ġ	Hu	P	Ñ	ñ	Å	å	Ā	ā
01F0	01F1	01F2	01F3	01F4	01F5	01F6	01F7	01F8	01F9	01FA	01FB	01FC	01FD
Ø	ø	À	à	Â	â	È	è	Ê	ê	Ì	ì	Î	î
01FE	01FF	0200	0201	0202	0203	0204	0205	0206	0207	0208	0209	020A	020B
Ö	ö	Ô	ô	Ř	ř	Ŕ	ŕ	Û	û	Û	û	Ş	ş
020C	020D	020E	020F	0210	0211	0212	0213	0214	0215	0216	0217	0218	0219

Encoded Glyphs

Ṭ	ṭ	Ʒ	Ʒ	Ĥ	ĥ	ŋ	ɖ	ɘ	ɘ	Ƶ	ƶ	À	à
021A	021B	021C	021D	021E	021F	0220	0221	0222	0223	0224	0225	0226	0227
Ƙ	ƙ	Ö	ö	Õ	õ	Ò	ò	Ȯ	ȯ	Ȳ	ȳ	↳	↳
0228	0229	022A	022B	022C	022D	022E	022F	0230	0231	0232	0233	0234	0235
ṭ	ƶ	ɖ	ɗ	Ɔ	Ƈ	ƈ	Ł	Ṭ	ƶ	Ʒ	ƶ	ƶ	ƶ
0236	0237	0238	0239	023A	023B	023C	023D	023E	023F	0240	0241	0242	0243
Ṭ	Λ	Ƙ	ƙ	ƶ	Ʒ	ƶ	ƶ	ƶ	ƶ	ƶ	ƶ		
0244	0245	0246	0247	0248	0249	024A	024B	024C	024D	024E	024F		
IPA Extensions (0250–02AF)													
ɐ	ɑ	ɒ	ɓ	ɔ	ɔ̃	ɔ̄	ɔ̅	ɔ̆	ɔ̇	ɔ̈	ɔ̉	ɔ̊	ɔ̋
0250	0251	0252	0253	0254	0255	0256	0257	0258	0259	025A	025B	025C	025D
ɔ̌	ɔ̍	ɔ̎	ɔ̏	ɔ̐	ɔ̑	ɔ̒	ɔ̓	ɔ̔	ɔ̕	ɔ̖	ɔ̗	ɔ̘	ɔ̙
025E	025F	0260	0261	0262	0263	0264	0265	0266	0267	0268	0269	026A	026B
ɔ̚	ɔ̛	ɔ̜	ɔ̝	ɔ̞	ɔ̟	ɔ̠	ɔ̡	ɔ̢	ɔ̣	ɔ̤	ɔ̥	ɔ̦	ɔ̧
026C	026D	026E	026F	0270	0271	0272	0273	0274	0275	0276	0277	0278	0279

Encoded Glyphs

Ŷ	ŷ	Ź	Ż	Ź	Ź	Ź	Ź	Ź	Ź	Ź	Ź	Ź	Ź
027A	027B	027C	027D	027E	027F	0280	0281	0282	0283	0284	0285	0286	0287
Ź	Ź	Ź	Ź	Ź	Ź	Ź	Ź	Ź	Ź	Ź	Ź	Ź	Ź
0288	0289	028A	028B	028C	028D	028E	028F	0290	0291	0292	0293	0294	0295
Ź	Ź	Ź	Ź	Ź	Ź	Ź	Ź	Ź	Ź	Ź	Ź	Ź	Ź
0296	0297	0298	0299	029A	029B	029C	029D	029E	029F	02A0	02A1	02A2	02A3
Ź	Ź	Ź	Ź	Ź	Ź	Ź	Ź	Ź	Ź	Ź	Ź	Ź	Ź
02A4	02A5	02A6	02A7	02A8	02A9	02AA	02AB	02AC	02AD	02AE	02AF		
Spacing Modifier Letters (02B0–02FF)													
Ź	Ź	Ź	Ź	Ź	Ź	Ź	Ź	Ź	Ź	Ź	Ź	Ź	Ź
02B0	02B1	02B2	02B4	02B7	02B8	02B9	02BA	02BB	02BC	02BF	02C0	02C6	02C7
Ź	Ź	Ź	Ź	Ź	Ź	Ź	Ź	Ź	Ź	Ź	Ź	Ź	Ź
02C8	02CA	02CB	02CC	02CE	02CF	02D0	02D1	02D4	02D6	02D7	02D8	02D9	02DA
Ź	Ź	Ź	Ź	Ź	Ź	Ź	Ź	Ź	Ź	Ź	Ź	Ź	Ź
02DB	02DC	02DD	02DE	02E0	02E1	02E2	02E3	02E4	02E5	02E6	02E7	02E8	02E9

Encoded Glyphs

”
02EE

Combining Diacritical Marks (0300–036F)														
˘	˙	˚	˛	˜	˘	˘	˘	˙	˙˙	?	◌	”	˘	!
0300	0301	0302	0303	0304	0305	0306	0307	0308	0309	030A	030B	030C	030D	
”	˘	˙	˙											
030F	0311	0312	0313	0316	0317	0318	0319	031A	031B	031C	031D	031E	031F	
˘	˙	˙	˙˙	◌	˙	˙	◌	!	◌	˘	˘	˘	˘	˘
0320	0321	0323	0324	0325	0326	0327	0328	0329	032A	032B	032C	032D	032E	032F
˘	˘	˘	˘	˘	˘	˘	˘	˘	˘	˘	˘	˘	˘	˘
0330	0331	0332	0334	0335	0336	0339	033A	033B	033C	033D	0342	0345	035C	

˘
0361

Greek and Coptic (0370–03FF)														
Ϝ	ϝ	Ϟ	ϟ	Ϡ	ϡ	Ϣ	ϣ	Ϥ	ϥ	Ϧ	ϧ	Ϩ	ϩ	Ϫ
0370	0371	0372	0373	0374	0375	0376	0377	037A	037B	037C	037D	037E	037F	

Encoded Glyphs

'	ˆ	À	·	È	Ĥ	Ì	Ò	Ÿ	Ω	ï	À	Β	Γ
0384	0385	0386	0387	0388	0389	038A	038C	038E	038F	0390	0391	0392	0393
Δ	Ε	Ζ	Η	Θ	Ι	Κ	Λ	Μ	Ν	Ξ	Ο	Π	Ρ
0394	0395	0396	0397	0398	0399	039A	039B	039C	039D	039E	039F	03A0	03A1
Σ	Τ	Υ	Φ	Χ	Ψ	Ω	ï	ÿ	ά	έ	ή	ί	ü
03A3	03A4	03A5	03A6	03A7	03A8	03A9	03AA	03AB	03AC	03AD	03AE	03AF	03B0
α	β	γ	δ	ε	ζ	η	θ	ι	κ	λ	μ	ν	ξ
03B1	03B2	03B3	03B4	03B5	03B6	03B7	03B8	03B9	03BA	03BB	03BC	03BD	03BE
ο	π	ρ	ς	σ	τ	υ	φ	χ	ψ	ω	ï	ü	ó
03BF	03C0	03C1	03C2	03C3	03C4	03C5	03C6	03C7	03C8	03C9	03CA	03CB	03CC
ù	ώ	κ	β	θ	γ	ϣ	ÿ	φ	ω	ι	ρ	ρ	ς
03CD	03CE	03CF	03D0	03D1	03D2	03D3	03D4	03D5	03D6	03D7	03D8	03D9	03DA
ς	ƒ	ƒ	⚡	⚡	Λ	λ	и	ρ	с	ј	Θ	€	Э
03DB	03DC	03DD	03DE	03DF	03E0	03E1	03F0	03F1	03F2	03F3	03F4	03F5	03F6

Encoded Glyphs

Ɔ	ɔ	Ɔ	М	м	р	Ɔ	Є	Э					
03F7	03F8	03F9	03FA	03FB	03FC	03FD	03FE	03FF					
Cyrillic (0400–04FF)													
È	Ë	Ӏ	Ѓ	Є	Ѕ	І	Ї	Ј	Љ	Њ	Ӓ	Ќ	Й
0400	0401	0402	0403	0404	0405	0406	0407	0408	0409	040A	040B	040C	040D
Ӛ	Ѡ	А	Б	В	Г	Д	Е	Ж	З	И	Й	К	Л
040E	040F	0410	0411	0412	0413	0414	0415	0416	0417	0418	0419	041A	041B
М	Н	О	П	Р	С	Т	У	Ф	Х	Ц	Ч	Ш	Щ
041C	041D	041E	041F	0420	0421	0422	0423	0424	0425	0426	0427	0428	0429
Ъ	Ы	Ь	Э	Ю	Я	а	б	в	г	д	е	ж	з
042A	042B	042C	042D	042E	042F	0430	0431	0432	0433	0434	0435	0436	0437
и	й	к	л	м	н	о	п	р	с	т	у	ф	х
0438	0439	043A	043B	043C	043D	043E	043F	0440	0441	0442	0443	0444	0445
ц	ч	ш	щ	ъ	ы	ь	э	ю	я	è	ë	Ӏ	Ѓ
0446	0447	0448	0449	044A	044B	044C	044D	044E	044F	0450	0451	0452	0453

Encoded Glyphs

€	Ɔ	ı	ï	j	љ	њ	ћ	ќ	й	ў	џ	ω	ω
0454	0455	0456	0457	0458	0459	045A	045B	045C	045D	045E	045F	0460	0461
Ђ	ђ	Є	є	А	а	Ӧ	ӧ	Ж	ж	Ӧ	ӧ	ӹ	Ӻ
0462	0463	0464	0465	0466	0467	0468	0469	046A	046B	046C	046D	046E	046F
Ψ	ψ	Θ	θ	V	v	ÿ	ÿ	Оу	оу	Й	й	Ђ	ђ
0470	0471	0472	0473	0474	0475	0476	0477	0478	0479	048A	048B	048C	048D
Р	р	Г	г	ƒ	ƒ	Ђ	ђ	Ж	ж	З	з	К	к
048E	048F	0490	0491	0492	0493	0494	0495	0496	0497	0498	0499	049A	049B
К	к	К	к	К	к	Ц	ц	Н	н	П	п	Q	q
049C	049D	049E	049F	04A0	04A1	04A2	04A3	04A4	04A5	04A6	04A7	04A8	04A9
С	с	Т	т	У	у	У	у	Х	х	Ц	ц	Ч	ч
04AA	04AB	04AC	04AD	04AE	04AF	04B0	04B1	04B2	04B3	04B4	04B5	04B6	04B7
Ч	ч	h	h	е	е	е	е	І	Ж	Ж	К	К	Л
04B8	04B9	04BA	04BB	04BC	04BD	04BE	04BF	04C0	04C1	04C2	04C3	04C4	04C5

Encoded Glyphs

Љ	Њ	Ћ	Ќ	Ѝ	Ў	ъ	ы	ь	э	ю	я	ѐ	ё
04C6	04C7	04C8	04C9	04CA	04CB	04CC	04CD	04CE	04CF	04D0	04D1	04D2	04D3
Æ	æ	Ё	ё	Ә	ә	Ӗ	ӗ	Ә	ә	Ӛ	ӛ	Ӝ	ӝ
04D4	04D5	04D6	04D7	04D8	04D9	04DA	04DB	04DC	04DD	04DE	04DF	04E0	04E1
Й	й	Ӣ	ӣ	Ӗ	ӗ	Ө	ө	Ӗ	ӗ	Ә	ә	Ӛ	ӛ
04E2	04E3	04E4	04E5	04E6	04E7	04E8	04E9	04EA	04EB	04EC	04ED	04EE	04EF
Ӝ	ӝ	Ӟ	ӟ	Ӡ	ӡ	Ҁ	ҁ	Ӗ	ӗ	҂	҃	҄	҅
04F0	04F1	04F2	04F3	04F4	04F5	04F6	04F7	04F8	04F9	04FA	04FB	04FC	04FD
҆	҇												
҈	҉												
04FE	04FF												

Cyrillic Supplement (0500-052F)													
ɀ	Ɂ	ɂ	Ƀ	Ʉ	Ʌ	Ɇ	ɇ	Ɉ	ɉ	Ɋ	ɋ	Ɍ	ɍ
0500	0501	0502	0503	0504	0505	0506	0507	0508	0509	050A	050B	050C	050D
Ɏ	ɏ	ɐ	ɑ	ɒ	ɓ	ɔ	ɔ	ɕ	ɖ	ɗ	ɘ	ə	ɚ
050E	050F	0510	0511	0512	0513	0514	0515	0516	0517	0518	0519	051A	051B

Encoded Glyphs

W	w	Ɔ	Ɔ	Ɔ	Ɔ	Ɔ	Ɔ	Ɔ	Ɔ	Ɔ	Ɔ	Ɔ	Ɔ
051C	051D	051E	051F	0520	0521	0522	0523	0524	0525	0526	0527	0528	0529

Ɔ	Ɔ	Ɔ	Ɔ	Ɔ	Ɔ
052A	052B	052C	052D	052E	052F

Thai (0E00-0E7F)

฿
0E3F

Phonetic Extensions (1D00-1D7F)

ə	ɸ	ɸ	ɸ	ɸ	ɸ	ɸ	ɸ	ɸ	ɸ	ɸ	ɸ	ɸ
1D4A	1D6C	1D6D	1D6E	1D6F	1D70	1D71	1D72	1D73	1D74	1D75	1D76	1D7B

Phonetic Extensions Supplement (1D80-1DBF)

ɸ	ɸ
1D91	1DBF

Combining Diacritical Marks Supplement (1DC0-1DFF)

˘	˘	˘	˘	˘	˘
1DC4	1DC5	1DC6	1DC7	1DC8	1DC9

Latin Extended Additional (1E00-1EFF)

Ā	ā	Ā	ā	Ā	ā	Ā	ā	Ā	ā	Ā	ā	Ā	ā
1E02	1E03	1E04	1E05	1E0A	1E0B	1E0C	1E0D	1E0E	1E0F	1E12	1E13	1E1E	1E1F

Encoded Glyphs

Ĥ	ĥ	Ĩ	ĥ	Ĭ	ĭ	Ĵ	ĵ	Ķ	ķ	Ĺ	ĺ	Ŋ	ŋ
1E24	1E25	1E2E	1E2F	1E36	1E37	1E3C	1E3D	1E3E	1E3F	1E40	1E41	1E44	1E45
Ņ	ņ	Ň	ň	Ŏ	ň	Ő	ő	Œ	œ	Ŕ	ŕ	Ŗ	ŗ
1E46	1E47	1E4A	1E4B	1E4C	1E4D	1E50	1E51	1E52	1E53	1E54	1E55	1E56	1E57
Ŗ	ŗ	Ś	ś	Ş	ş	Ţ	ţ	Ț	ț	Ț	ț	Ț	ț
1E5A	1E5B	1E60	1E61	1E62	1E63	1E6A	1E6B	1E6C	1E6D	1E6E	1E6F	1E70	1E71
Ũ	ũ	Ẁ	ẁ	Ẃ	ẃ	Ẅ	ẅ	Ẑ	ẑ	Ẓ	ẓ	Ẕ	ẕ
1E78	1E79	1E80	1E81	1E82	1E83	1E84	1E85	1E92	1E93	1E9E	1EA0	1EA1	1EA2
Ǻ	ǻ	Ǽ	ǽ	ǿ	Ǿ	Ǻ	ǻ	Ǽ	ǽ	Ǿ	ǿ	Ǻ	ǻ
1EA3	1EA4	1EA5	1EA6	1EA7	1EA8	1EA9	1EAA	1EAB	1EAC	1EAD	1EAE	1EAF	1EB0
ǻ	Ǽ	ǽ	ǿ	Ǿ	Ǻ	ǻ	Ǽ	ǽ	ǿ	Ǿ	Ǻ	ǻ	Ǽ
1EB1	1EB2	1EB3	1EB4	1EB5	1EB6	1EB7	1EB8	1EB9	1EBA	1EBB	1EBC	1EBD	1EBE
ǽ	ǿ	Ǿ	Ǻ	ǻ	Ǽ	ǽ	ǿ	Ǿ	Ǻ	ǻ	Ǽ	ǽ	ǿ
1EBF	1EC0	1EC1	1EC2	1EC3	1EC4	1EC5	1EC6	1EC7	1EC8	1EC9	1ECA	1ECB	1ECC

Encoded Glyphs

◌̇	◌̈́	◌̈́	◌̈́	◌̈́	◌̈́	◌̈́	◌̈́	◌̈́	◌̈́	◌̈́	◌̈́	◌̈́	◌̈́
1ECD	1ECE	1ECF	1ED0	1ED1	1ED2	1ED3	1ED4	1ED5	1ED6	1ED7	1ED8	1ED9	1EDA
◌̈́	◌̈́	◌̈́	◌̈́	◌̈́	◌̈́	◌̈́	◌̈́	◌̈́	◌̈́	◌̈́	◌̈́	◌̈́	◌̈́
1EDB	1EDC	1EDD	1EDE	1EDF	1EE0	1EE1	1EE2	1EE3	1EE4	1EE5	1EE6	1EE7	1EE8
◌̈́	◌̈́	◌̈́	◌̈́	◌̈́	◌̈́	◌̈́	◌̈́	◌̈́	◌̈́	◌̈́	◌̈́	◌̈́	◌̈́
1EE9	1EEA	1EEB	1EEC	1EED	1EEE	1EEF	1EF0	1EF1	1EF2	1EF3	1EF4	1EF5	1EF6
◌̈́	◌̈́	◌̈́											
1EF7	1EF8	1EF9											
Greek Extended (1F00–1FFF)													
◌̈́	◌̈́	◌̈́	◌̈́	◌̈́	◌̈́	◌̈́	◌̈́	◌̈́	◌̈́	◌̈́	◌̈́	◌̈́	◌̈́
1F00	1F01	1F02	1F03	1F04	1F05	1F06	1F07	1F08	1F09	1F0A	1F0B	1F0C	1F0D
◌̈́	◌̈́	◌̈́	◌̈́	◌̈́	◌̈́	◌̈́	◌̈́	◌̈́	◌̈́	◌̈́	◌̈́	◌̈́	◌̈́
1F0E	1F0F	1F10	1F11	1F12	1F13	1F14	1F15	1F18	1F19	1F1A	1F1B	1F1C	1F1D
◌̈́	◌̈́	◌̈́	◌̈́	◌̈́	◌̈́	◌̈́	◌̈́	◌̈́	◌̈́	◌̈́	◌̈́	◌̈́	◌̈́
1F20	1F21	1F22	1F23	1F24	1F25	1F26	1F27	1F28	1F29	1F2A	1F2B	1F2C	1F2D

Encoded Glyphs

ƆH	ƆH	í	ì	ï	î	ï	ï	ï	ï	’	’	”	”
1F2E	1F2F	1F30	1F31	1F32	1F33	1F34	1F35	1F36	1F37	1F38	1F39	1F3A	1F3B
”	”	”	”	ó	ó	ö	ö	ö	ö	’O	’O	”O	”O
1F3C	1F3D	1F3E	1F3F	1F40	1F41	1F42	1F43	1F44	1F45	1F48	1F49	1F4A	1F4B
”O	”O	ú	ú	ü	ü	ü	ü	ÿ	ÿ	’Y	”Y	”Y	ƆY
1F4C	1F4D	1F50	1F51	1F52	1F53	1F54	1F55	1F56	1F57	1F59	1F5B	1F5D	1F5F
ŵ	ŵ	ŵ	ŵ	ŵ	ŵ	ŵ	ŵ	’Ŧ	’Ŧ	”Ŧ	”Ŧ	”Ŧ	”Ŧ
1F60	1F61	1F62	1F63	1F64	1F65	1F66	1F67	1F68	1F69	1F6A	1F6B	1F6C	1F6D
ƆŦ	ƆŦ	à	á	é	é	è	è	ì	í	ò	ó	ù	ú
1F6E	1F6F	1F70	1F71	1F72	1F73	1F74	1F75	1F76	1F77	1F78	1F79	1F7A	1F7B
ŵ	ŵ	à	à	à	à	à	à	à	à	’À	’À	”À	”À
1F7C	1F7D	1F80	1F81	1F82	1F83	1F84	1F85	1F86	1F87	1F88	1F89	1F8A	1F8B
”À	”À	ƆÀ	ƆÀ	è	è	è	è	è	è	è	è	’H	’H
1F8C	1F8D	1F8E	1F8F	1F90	1F91	1F92	1F93	1F94	1F95	1F96	1F97	1F98	1F99

Encoded Glyphs

”H	“H	”H	”H	”H	”H	ŵ	ŵ	ŵ	ŵ	ŵ	ŵ	ŵ	ŵ
1FA9A	1FA9B	1FA9C	1FA9D	1FA9E	1FA9F	1FAA0	1FAA1	1FAA2	1FAA3	1FAA4	1FAA5	1FAA6	1FAA7
’Q	’Q	”Q	”Q	”Q	”Q	”Q	”Q	ǎ	ā	à	α	á	ã
1FA88	1FA89	1FA8A	1FA8B	1FA8C	1FA8D	1FA8E	1FA8F	1FB00	1FB01	1FB02	1FB03	1FB04	1FB06
ã	Ǻ	Ā	À	À	À	’	’	’	˜	˜	ḥ	η	ḥ
1FB77	1FB88	1FB99	1FBA0	1FBB1	1FBC2	1FBD3	1FBE4	1FBF5	1FC06	1FC17	1FC28	1FC39	1FC40
ñ	ñ	’E	’E	’H	’H	H	”	”	”	ı	ı	ı	ı
1FC66	1FC77	1FC88	1FC99	1FCA0	1FCB1	1FCC2	1FCD3	1FCE4	1FCF5	1FD06	1FD17	1FD28	1FD39
ı	ı	ı	ı	ı	ı	”	”	”	ŭ	ū	ù	ú	ρ
1FD66	1FD77	1FD88	1FD99	1FDA0	1FDB1	1FDD2	1FDE3	1FDF4	1FE05	1FE16	1FE27	1FE38	1FE49
ρ	ū	ū	ÿ	ÿ	’Y	’Y	’P	˙	˙	’	ŵ	ω	ŵ
1FE55	1FE66	1FE77	1FE88	1FE99	1FEA0	1FEB1	1FEC2	1FED3	1FEE4	1FEF5	1FF06	1FF17	1FF28
ŵ	ŵ	’O	’O	’Q	’Q	Q	’	’					
1FF66	1FF77	1FF88	1FF99	1FFA0	1FFB1	1FFC2	1FFD3	1FFE4					

Encoded Glyphs

General Punctuation (2000–206F)													
				↑	↶	↷	—	—	—	—	—	—	
2007	2008	200B	200C	200D	200E	200F	2010	2011	2012	2013	2014	2015	2016
‘	’	,	“	”	„	†	‡	•	…	%	<	>	⌒
2018	2019	201A	201C	201D	201E	2020	2021	2022	2026	2030	2039	203A	203F
/	7												
2044	204A												
Superscripts and Subscripts (2070–209F)													
0	4	5	6	7	8	9	+	-	--	()	n	0
2070	2074	2075	2076	2077	2078	2079	207A	207B	207C	207D	207E	207F	2080
1	2	3	4	5	6	7	8	9	+	-	--	()
2081	2082	2083	2084	2085	2086	2087	2088	2089	208A	208B	208C	208D	208E
Currency Symbols (20A0–20CF)													
₱	₲	₳	₴	₵	₶	₷	₸	₹	₺	₻			
20A1	20A6	20A9	20AA	20AB	20AC	20AF	20B4	20B9	20BA	20BD			
Letterlike Symbols (2100–214F)													
g	ℓ	№	™	Ω	e								
210A	2113	2116	2122	2126	212E								

Encoded Glyphs

Number Forms (2150–218F)

$\frac{1}{3}$	$\frac{2}{3}$	$\frac{1}{5}$	$\frac{2}{5}$	$\frac{3}{5}$	$\frac{4}{5}$	$\frac{1}{6}$	$\frac{5}{6}$	$\frac{1}{8}$	$\frac{3}{8}$	$\frac{5}{8}$	$\frac{7}{8}$	$\frac{1}{}$
2153	2154	2155	2156	2157	2158	2159	215A	215B	215C	215D	215E	215F

Arrows (2190–21FF)

←	↑	→	↓	↔	↕	↖	↗	↘	↙	⇐	⇑	⇒	⇓
2190	2191	2192	2193	2194	2195	2196	2197	2198	2199	21E6	21E7	21E8	21E9

⇕
21EA

Mathematical Operators (2200–22FF)

∂	∕	Δ	∏	Σ	−	/	⋅	√	∞	∫	≈	≠	≤
2202	2205	2206	220F	2211	2212	2215	2219	221A	221E	222B	2248	2260	2264

≥	⋅
2265	22C5

Miscellaneous Technical (2300–23FF)

⌘	⌘	⌨	⌘	↶	⏻	Ⓜ		☾
2326	2327	2328	232B	23CE	23FB	23FC	23FD	23FE

Geometric Shapes (25A0–25FF)

◻	▲	▲	▶	▶	▶	▼	▼	◀	◀	◀	◊	●
25AF	25B2	25B4	25B6	25B8	25BA	25BC	25BE	25C0	25C2	25C4	25CA	25CF

Encoded Glyphs

Dingbats (2700–27BF)



27A1

Miscellaneous Mathematical Symbols-B (2980–29FF)



2981

Miscellaneous Symbols and Arrows (2B00–2BFF)



2B05



2B06



2B07



2B58

Latin Extended-C (2C60–2C7F)

Ŕ

2C64

ȁ

2C65

ƚ

2C66

ɑ

2C6D

ʋ

2C71

Ƶ

2C72

Ƶ

2C73

Latin Extended-D (A720–A7FF)

⋮

A789

=

A78A

ˆ

A78B

ˆ

A78C

Ɔ

A78D

Ɔ

A7AA

Ɔ

A7AD

Ɔ

A7AE

Ɔ

A7B2

Ɔ

A7B3

Ɔ

A7B4

Ɔ

A7B5

Ɔ

A7B6

Ɔ

A7B7

Latin Extended-E (AB30–AB6F)

Ɔ

AB53

Alphabetic Presentation Forms (FB00–FB4F)

fi

FB01

fl

FB02

Encoded Glyphs

Arabic Presentation Forms-B (FE70-FEFF)

FEFF

Miscellaneous Symbols and Pictographs (1F300-1F5FF)



1F310

Unencoded Glyphs

Case Sensitive Forms													
!	?	()	{	}	[]	-	-	-	-	«	»
exclamdown.case	questiondown.case	parenleft.case	parenright.case	braceleft.case	braceright.case	bracketleft.case	bracketright.case	hyphen.case	softhyphen.case	endash.case	emdash.case	guillemetleft.case	guillemetright.case
<	>	∞	¨	·	˘	˙	˚	˛	˜	ˆ	ˇ	˘	◊
guilsinglleft.case	guilsinglright.case	infinity.case	dieresiscomb.case	dotaccentcomb.case	gravecomb.case	acutecomb.case	acutecomb.case.loclHUN	acutecomb.case.loclPLK	hungarumlautcomb.case	circumflexcomb.case	caroncomb.case	brevecomb.case	ringcomb.case
~	—	̂	“	,	˘	˙	˚	˛	ˆ	ˇ			
tildecomb.case	macroncomb.case	hookabovecomb.case	dblgravecomb.case	horncomb.case	commaaccentcomb.case	cedillacomb.case	acute.case	acute.case.loclHUN	acute.case.loclPLK	breve.case	caron.case	cedilla.case	cedilla.case.ALT
^	¨	·	˘	“	—	◊	~	ı	,	ı	“	“	“
circumflex.case	dieresis.case	dotaccent.case	grave.case	hungarumlaut.case	macron.case	ring.case	tilde.case	tonos.case	psill.case	dasia.case	psilivaria.case	dasiavaria.case	psilioxia.case
“	̂	̂	ı	ı	ı	˘	˙	≧	≦	˘	˘	̂	˘
dasiaoxia.case	psiliperispomeni.case	dasiaperispomeni.case	varia.case	oxia.case	descstraight-cy.case	breve-cy.case	descTail-cy.case	macrongravesingle.case	macronacutesingle.case	breveacute.case	brevegrave.case	brevehookabove.case	brevetilde.case
˘	˘	̂	˘	˘	˘	˘	˘	˘	˘	˘	˘	˘	˘
circumflexacute.case	circumflexgrave.case	circumflexhookabove.case	circumflextilde.case	dieresisacutecomb.case	dieresisgravecomb.case	dieresiscaroncomb.case	dieresismacroncomb.case	tildeacute.case	hookHELPER.case	hookaboveHELPER2.case	dotmacroncomb.case	ringacutecomb.case	tildemacroncomb.case
˘													
dieresistilde.case													

Unencoded Glyphs

Denominators													
0	1	2	3	4	5	6	7	8	9	()	+	-
zero.dnom	one.dnom	two.dnom	three.dnom	four.dnom	five.dnom	six.dnom	seven.dnom	eight.dnom	nine.dnom	parenleft.dnom	parenright.dnom	plus.dnom	minus.dnom
--													
equal.dnom													
Fraction													
space.frac													
Generic Alternates													
'													
caron.alt													
Ligatures													
f	ḟ	ff	fḟ	ffj	ffl	fḟ	fḟt	fi	fj	fl	ft		
f_short	fdotaccent_short	f_f	f_f_i	f_f_j	f_f_l	f_f_short	f_f_t	f_i	f_j	f_l	f_t		
Localized Forms													
i													
idotaccent													
Numerators													
0	1	2	3	4	5	6	7	8	9	()	+	-
zero.numr	one.numr	two.numr	three.numr	four.numr	five.numr	six.numr	seven.numr	eight.numr	nine.numr	parenleft.numr	parenright.numr	plus.numr	minus.numr

Unencoded Glyphs

--
equal.numr

Old Style Figures (Proportional)

0 zero.osf	1 one.osf	2 two.osf	3 three.osf	4 four.osf	5 five.osf	6 six.osf	7 seven.osf	8 eight.osf	9 nine.osf	# numbersign.osf	— figuredash.osf	₺ baht.osf	₵ cent.osf
₪ colonsign.osf	¤ currency.osf	\$ dollar.osf	₲ dong.osf	₹ drachma.osf	€ euro.osf	₴ hryvnia.osf	₺ liraTurkish.osf	₦ naira.osf	₹ ruble.osf	₹ rupeeIndian.osf	₪ sheqel.osf	£ sterling.osf	₩ won.osf
¥ yen.osf	+ plus.osf	- minus.osf	× multiply.osf	÷ divide.osf	= equal.osf	≠ notequal.osf	> greater.osf	< less.osf	≥ greaterequal.osf	≤ lessequal.osf	± plusminus.osf	≈ approxequal.osf	~ asciitilde.osf
¬ logicalnot.osf	∞ infinity.osf	∫ integral.osf	∏ product.osf	∑ summation.osf	√ radical.osf	∂ partialdiff.osf	% percent.osf	‰ perthousand.osf	◊ lozenge.osf	§ section.osf	° degree.osf	† dagger.osf	‡ daggerdbl.osf

Old Style Figures (Tabular)

0 zero.tosf	1 one.tosf	2 two.tosf	3 three.tosf	4 four.tosf	5 five.tosf	6 six.tosf	7 seven.tosf	8 eight.tosf	9 nine.tosf	# numbersign.tosf	— figuredash.tosf	₺ baht.tosf	₵ cent.tosf
₪ colonsign.tosf	¤ currency.tosf	\$ dollar.tosf	₲ dong.tosf	₹ drachma.tosf	€ euro.tosf	₴ hryvnia.tosf	₺ liraTurkish.tosf	₦ naira.tosf	₹ ruble.tosf	₹ rupeeIndian.tosf	₪ sheqel.tosf	£ sterling.tosf	₩ won.tosf

Unencoded Glyphs

¥ yen.tosf	+ plus.tosf	- minus.tosf	× multiply.tosf	÷ divide.tosf	= equal.tosf	≠ notequal.tosf	> greater.tosf	< less.tosf	≥ greaterequal.tosf	≤ lessequal.tosf	± plusminus.tosf	≈ approxequal.tosf	~ asciitilde.tosf	
¬ logicalnot.tosf	∞ infinity.tosf	∫ integral.tosf	∏ product.tosf	∑ summation.tosf	√ radical.tosf	∂ partialdiff.tosf	% percent.tosf	‰ perthousand.tosf	◊ lozenge.tosf	§ section.tosf	° degree.tosf	† dagger.tosf	‡ daggerdbl.tosf	
Other	Á Aacute.loclHUN	Ć Cacute.loclPLK	É Eacute.loclHUN	Í Iacute.loclHUN	Ń Nacute.loclPLK	Ó Oacute.loclHUN	Ó Oacute.loclPLK	Ś Sacute.loclPLK	Ú Uacute.loclHUN	Ž Zacute.loclPLK	ǎ a.map	á aacute.loclHUN	ǎ astroke.map	ć cacute.loclPLK
é eacute.loclHUN	ǎ g.map	í iacute.loclHUN	† istroke.dotless	ń nacute.loclPLK	ó oacute.loclHUN	ó oacute.loclPLK	ś sacute.loclPLK	ú uacute.loclHUN	ž zacute.loclPLK	ǎ ordfeminine.001	ǎ ordmasculine.001	Ц TseHelper-cy	Д De-cy.loclBGR	
Λ El-cy.loclBGR	Φ Ef-cy.loclBGR	Љ Lje-cy.loclBGR	Г Ghemiddlehook-cy.loclBGR	Ц Pemiddlehook-cy.loclBGR	ДК Dzzhe-cy.loclBGR	Д Dche-cy.loclBGR	Л Eldescender-cy.loclBGR	Л Eltail-cy.loclBGR	Ғ Gestrokehook-cy.loclBGR	Х Hahook-cy.loclBGR	Љ Komilje-cy.loclBGR	Л Elhook-cy.loclBGR	Л Lha-cy.loclBGR	
Λ Elmiddlehook-cy.loclBGR	δ be-cy.loclSRB	В ve-cy.loclBGR	з ge-cy.loclBGR	џ gje-cy.loclBGR	г de-cy.loclBGR	ж zhe-cy.loclBGR	и ii-cy.loclBGR	ӱ iishort-cy.loclBGR	ӱ iishorttail-cy.loclBGR	ù iigrave-cy.loclBGR	к ka-cy.loclBGR	ќ kje-cy.loclBGR	л el-cy.loclBGR	
п pe-cy.loclBGR	т te-cy.loclBGR	џ tse-cy.loclBGR	ш sha-cy.loclBGR	щ shcha-cy.loclBGR	џ dzhe-cy.loclBGR	љ lje-cy.loclBGR	ю iu-cy.loclBGR	ѝ ghestroke-cy.loclBGR	џ ghemiddlehook-cy.loclBGR	к zhedescender-cy.loclBGR	к kadesecender-cy.loclBGR	к kavertikalstroke-cy.loclBGR	ң enghe-cy.loclBGR	

Unencoded Glyphs

ŋ	ŋ	ŋ	ɥ	gk	ɣ	Λ	ǰ	ħ	Λ	ū	ü	ƶ	ƶ
pemiddlehook-cv.loclBGR	pedescender-cv.loclBGR	tedescender-cv.loclBGR	tetse-cy.loclBGR	dzzhe-cy.loclBGR	dche-cy.loclBGR	eldescender-cv.loclBGR	zhebreve-cy.loclBGR	kahook-cy.loclBGR	eltail-cy.loclBGR	imacron-cy.loclBGR	idieresis-cy.loclBGR	gedescender-cv.loclBGR	gestrokehook-cv.loclBGR
χ	ℒ	ℓ	Λ	℞	ℒ	Π	?	apple	´	´	overlinecomb.001	acute.loclHUN	acute.loclPLK
hahook-cy.loclBGR	komilje-cy.loclBGR	komitje-cy.loclBGR	elhook-cy.loclBGR	lha-cy.loclBGR	elmiddlehook-cv.loclBGR	tsehelper-cy	.notdef	apple	acutecomb.loclHUN	acutecomb.loclPLK	overlinecomb.001	acute.loclHUN	acute.loclPLK
ć	ꞥ	ı	¨	˘	Ʒ	ˊ	ⵝ	null	¸	¨	¨	˘	˘
ogonek.thin	descRound-cy	descStraight-cy	dieresisNARROWcomb	breve-cy	Ksi-cyHELPER	descTail-cy	jcrossettaildotless	null	cedillaTcedilla	dieresisacutecomb	dieresisgravecomb	breveacute	brevegrave
Ʒ	≈	◁	▷	⤿	≈	ˊ	ˋ	~	¨	¨	hookHELPER	hookaboveHELPER	hookaboveHELPER2
brevehookabove	brevetilde	circumflexacute	circumflexgrave	circumflexhookabove	circumflextilde	acutedbl	gravedbl	tildedbl	dieresiscaroncomb	dieresismacroncomb	hookHELPER	hookaboveHELPER	hookaboveHELPER2
˘	≡	≡	≈	¨	˙	ó	≈						
hookrightHELPER	macrongravesingle	macronacutesingle	tildeacute	dieresisilde	dotmacroncomb	ringacutecomb	tildemacroncomb						
Slashed Zero													
0	0	0	0										
zero.osf.zero	zero.tf.zero	zero.tosf.zero	zero.zero										
Small Capitals													
Ð	Ɔ	Ɔ	Ɔ	Ɔ	Ɔ	Ɔ	Ɔ	Ɔ	Ɔ	Ɔ	Ɔ	Ɔ	Ɔ
Dafrikan.sc	Fhook.sc	Hhook.sc	Hturned.sc	Hturned.sc.ss02	Hwair.sc	Iotaafrican.sc	Jcrossedtail.sc	Lbelt.sc	Nlongrightleg.sc	Omega-Latin.sc	Rsmall.sc	Rtail.sc	Rtail.sc.ss01

Unencoded Glyphs

Ů	Ƴ	Ȧ	Ȧ́	Ȧ̂	Ȧ̃	Ǡ	Ȧ̅	Ȧ̆	Ȧ̇	Ȧ̈	Ȧ̉	Ȧ̊	Ȧ̋
Upsilonafrican.sc	Gammaafrican.sc	a.sc	acute.loclHUN.sc	acute.sc	abreve.sc	abreveacute.sc	abrevedotbelow.sc	abrevegrave.sc	abrevehookabove.sc	abrevetilde.sc	acaron.sc	acircumflex.sc	acircumflexacute.sc
Ȧ̌	Ȧ̍	Ȧ̎	Ȧ̏	Ȧ̐	Ȧ̑	Ȧ̒	Ȧ̓	Ȧ̔	Ȧ̕	Ȧ̖	Ȧ̗	Ȧ̘	ɑ
acircumflexdotbelow.sc	acircumflexgrave.sc	acircumflexhookabove.sc	acircumflextilde.sc	adblgrave.sc	adieresis.sc	adieresismacron.sc	adotaccent.sc	adotbelow.sc	adotmacron.sc	agrave.sc	ahookabove.sc	ainvertedbreve.sc	alpha-latin.sc
Ȧ̙	Ȧ̚	Ȧ̛	Ȧ̜	Ȧ̝	Ȧ̞	Ȧ̟	Ȧ̠	Ȧ̡	Ȧ̢	Ạ̇	Ȧ̤	Ḁ̇	Ȧ̦
amacron.sc	aogonek.sc	aring.sc	aringacute.sc	astroke.sc	atilde.sc	ae.sc	aeacute.sc	aemacron.sc	b.sc	bdotaccent.sc	bdotbelow.sc	beta-latin.sc	bhook.sc
Ȧ̧	Ą̇	Ȧ̩	Ȧ̪	Ȧ̫	Ȧ̬	Ȧ̭	Ȧ̮	Ȧ̯	Ȧ̰	Ȧ̱	Ȧ̲	Ȧ̳	Ȧ̴
bhook.sc.sse2	bstroke.sc	btopbar.sc	c.sc	cacute.sc	cacute.sc.loclPLK	ccaron.sc	ccedilla.sc	ccircumflex.sc	cdotaccent.sc	chi-latin.sc	chook.sc	cstroke.sc	d.sc
Ȧ̵	Ȧ̶	Ȧ̷	Ȧ̸	Ȧ̹	Ȧ̺	Ȧ̻	Ȧ̼	Ȧ̽	Ȧ̾	Ȧ̿	Ȧ̿̈	Ȧ̿̉	Ȧ̿̊
eth.sc	dcaron.sc	dcircumflexbelow.sc	dcroat.sc	ddotaccent.sc	ddotbelow.sc	dhook.sc	dlinebelow.sc	dtil.sc	dtopbar.sc	dz.sc	dzcaron.sc	e.sc	eacute.loclHUN.sc
Ȧ̿̋	Ȧ̿̌	Ȧ̿̍	Ȧ̿̎	Ȧ̿̏	Ȧ̿̐	Ȧ̿̑	Ȧ̿̒	Ȧ̿̓	Ȧ̿̔	Ȧ̿̕	Ȧ̖̿	Ȧ̗̿	Ȧ̘̿
eacute.sc	ebreve.sc	ecaron.sc	ecedilla.sc	ecircumflex.sc	ecircumflexacute.sc	ecircumflexdotbelow.sc	ecircumflexgrave.sc	ecircumflexhookabove.sc	ecircumflextilde.sc	edblgrave.sc	adieresis.sc	edotaccent.sc	edotbelow.sc
Ȧ̙̿	Ȧ̿̚	Ȧ̛̿	Ȧ̜̿	Ȧ̝̿	Ȧ̞̿	Ȧ̟̿	Ȧ̠̿	Ȧ̡̿	Ȧ̢̿	Ạ̇̿	Ȧ̤̿	Ḁ̇̿	Ȧ̦̿
egrave.sc	ehookabove.sc	einvertedbreve.sc	emacron.sc	eogonek.sc	eopen.sc	ereversed.sc	esh.sc	estroke.sc	etilde.sc	eturned.sc	schwa.sc	ezh.sc	ezhcaron.sc

Unencoded Glyphs

Ƶ	F	Ƒ	FI	FL	G	Ɛ	Ǧ	ǧ	Ǩ	Ǭ	ǭ	Ǯ	ǰ
ezhreversed.sc	f.sc	fdotaccent.sc	fi.sc	fl.sc	g.sc	gacute.sc	gbreve.sc	gcaron.sc	gcircumflex.sc	gcommaaccent.sc	gdotaccent.sc	ghook.sc	glottalstop.sc
Ǫ	Ƴ	H	Ĥ	ĥ	Ĥ	Ħ	I	I	Í	Í	İ	Ĳ	Î
gstroke.sc	yogh.sc	h.sc	hbar.sc	hcaron.sc	hcircumflex.sc	hdotbelow.sc	i.sc	idotless.sc	iacute.loclHUN.sc	iacute.sc	ibreve.sc	icaron.sc	icircumflex.sc
İ	ï	í	ı	ı	ì	ı	î	IJ	Ī	Ĳ	†	ĩ	Ĵ
idblgrave.sc	idieresis.sc	idieresisacute.sc	idotaccent.sc	idotbelow.sc	igrave.sc	ihookabove.sc	iinvertedbreve.sc	ij.sc	imacron.sc	iogonek.sc	istroke.sc	itilde.sc	j.sc
Ĵ	ƚ	K	Ķ	Ƙ	K	K	L	Ĺ	Ł	Ł	Ł	Ł	Ł
jcircumflex.sc	jstroke.sc	k.sc	kcaron.sc	kcommaaccent.sc	kgreenlandic.sc	khook.sc	l.sc	lacute.sc	lbar.sc	lcaron.sc	lcircumflexbelow.sc	lcommaaccent.sc	ldot.sc
Ł	LJ	ł	M	Ĺ	Ṁ	Ƶ	N	Ń	Ń	N	Ñ	Ñ	Ñ
ldotbelow.sc	lj.sc	lslash.sc	m.sc	macute.sc	mdotaccent.sc	mturned.sc	n.sc	nacute.sc	nacute.sc.loclPLK	napostrophe.sc	ncaron.sc	ncircumflexbelow.sc	ncommaaccent.sc
Ṁ	Ṃ	Ṅ	Ṇ	ŋ	Ṇ	Ṇ	NJ	Ñ	O	Ó	Ó	Ó	Ø
ndotaccent.sc	ndotbelow.sc	ngrave.sc	eng.sc	eng.sc.ss01	nhookleft.sc	nhookleft.sc.ss01	nj.sc	ntilde.sc	o.sc	oacute.loclHUN.sc	oacute.sc	oacute.sc.loclPLK	obarred.sc
Ǫ	Ǫ	Ô	Ǫ	Ô	Ồ	Ồ	Ồ	Ồ	Ö	Ö	Ò	Ò	Ọ
obreve.sc	ocaron.sc	ocircumflex.sc	ocircumflexacute.sc	ocircumflexdotbelow.sc	ocircumflexgrave.sc	ocircumflexhookabove.sc	ocircumflextilde.sc	odblgrave.sc	odieresis.sc	odieresismacron.sc	odotaccent.sc	odotaccentmacron.sc	odotbelow.sc

Unencoded Glyphs

ò ograve.sc	ó ohookabove.sc	ơ ohorn.sc	ớ ohornacute.sc	ợ ohorndotbelow.sc	ờ ohorngrave.sc	ở ohornhookabove.sc	ỡ ohorntilde.sc	ő ohungarumlaut.sc	ơ oi.sc	ô oinvertedbreve.sc	ō omacron.sc	õ omacronacute.sc	õ omacrongrave.sc
q oogonek.sc	q̄ oogonekmacron.sc	ɔ oopen.sc	ø oslash.sc	ø̇ oslashacute.sc	õ otilde.sc	õ̇ otildeacute.sc	ȭ otildemacron.sc	ɝ ou.sc	œ oe.sc	ƀ p.sc	ƀ́ pacute.sc	ƀ̇ pdotaccent.sc	Ɔ phook.sc
þ thorn.sc	q q.sc	q̣ qhooktail.sc	r r.sc	rá racute.sc	ř rcaron.sc	Ṛ rcommaaccent.sc	ř̄ rdblgrave.sc	Ṛ̇ rdotbelow.sc	ŕ rhook.sc	ŕ̂ rinvertedbreve.sc	ŕ rstroke.sc	s s.sc	š sacute.sc
ś sacute.sc.loclPLK	š sacaron.sc	ş scedilla.sc	ș̂ scircumflex.sc	ș̇ scommaaccent.sc	ș̇̂ sdotaccent.sc	ș̇̇ sdotbelow.sc	ß germandbls.sc	Ƨ t.sc	Ƨ̄ tbar.sc	ť tcaron.sc	ț tcedilla.sc	ț̂ tcircumflexbelow.sc	ț̇ tcommaaccent.sc
Ƨ̄ tdiagonalstroke.sc	ț̇̂ tdotaccent.sc	ț̇̇ tdotbelow.sc	Ƨ̂ thook.sc	ț̂̄ tlinebelow.sc	5 tonefive.sc	6 tonesix.sc	2 tonetwo.sc	Ƨ̄ tetroflexhook.sc	u u.sc	ú uacute.loclHUN.sc	ú uacute.sc	u̇ ubar.sc	ũ ubreve.sc
ũ ucaron.sc	û ucircumflex.sc	ü udblgrave.sc	ü udieresis.sc	ü̇ udieresisacute.sc	ü̇̂ udieresisacaron.sc	ü̇̇ udieresisgrave.sc	ǖ udieresismacron.sc	ụ udotbelow.sc	ù ugrave.sc	ú̇ uhookabove.sc	u̇ uhorn.sc	ú̇̂ uhornacute.sc	u̇̇̂ uhorndotbelow.sc
Û uhorngrave.sc	Û̇ uhornhookabove.sc	Û̇̂ uhorntilde.sc	Û̄ uhungarumlaut.sc	Û̂̄ uinvertedbreve.sc	ū umacron.sc	u̇ uogonek.sc	uring uring.sc	ũ utilde.sc	ũ̇ utildeacute.sc	v v.sc	u vhook.sc	Λ vturned.sc	w w.sc

Unencoded Glyphs

Ű	Ŵ	Ẁ	Ẃ	Ẅ	Ʀ	Ƨ	Ƴ	ƶ	Ŷ	ÿ	Ỳ	Ƴ	
wacute.sc	wcircumflex.sc	wdieresis.sc	wgrave.sc	whook.sc	wynn.sc	x.sc	y.sc	yacute.sc	ycircumflex.sc	ydieresis.sc	ydotbelow.sc	ygrave.sc	yhook.sc
Ÿ	Ȳ	Ƴ	Ỹ	Ƶ	ƶ	Ʒ	Ž	Ẑ	Ʒ	Ʒ	Ʒ	А	Б
yhookabove.sc	ymacron.sc	ystroke.sc	ytilde.sc	z.sc	zacute.sc	zacute.sc.loclPLX	zcaron.sc	zdotaccent.sc	zdotbelow.sc	zhook.sc	zstroke.sc	a-cy.sc	be-cy.sc
В	Г	Ґ	Ғ	Д	Д	Е	È	Ë	Ж	З	И	Й	Й
ve-cy.sc	ge-cy.sc	gje-cy.sc	gheupturn-cy.sc	de-cy.loclBGR.sc	de-cy.sc	ie-cy.sc	iegrave-cy.sc	io-cy.sc	zhe-cy.sc	ze-cy.sc	ii-cy.sc	iishort-cy.sc	iigrave-cy.sc
Ў	К	Ќ	Л	Л	М	Н	О	П	Р	С	Т	У	Ў
iishorttail-cy.sc	ka-cy.sc	kje-cy.sc	el-cy.loclBGR.sc	el-cy.sc	em-cy.sc	en-cy.sc	o-cy.sc	pe-cy.sc	er-cy.sc	es-cy.sc	te-cy.sc	u-cy.sc	ushort-cy.sc
Ф	Ф	Х	Ч	Ц	Ш	Щ	Ѡ	Ь	Ѣ	Ы	Ь	Ь	Нь
ef-cy.loclBGR.sc	ef-cy.sc	ha-cy.sc	che-cy.sc	tse-cy.sc	sha-cy.sc	shcha-cy.sc	dzhe-cy.sc	softsign-cy.sc	hardsign-cy.sc	yeru-cy.sc	lje-cy.loclBGR.sc	lje-cy.sc	nje-cy.sc
Ѕ	Є	Э	І	İ	Ј	Ћ	Ю	Я	Ђ	Ω	Ѧ	Ю	А
dze-cy.sc	e-cy.sc	ereversed-cy.sc	i-cy.sc	yi-cy.sc	je-cy.sc	tshe-cy.sc	iu-cy.sc	ia-cy.sc	dje-cy.sc	omega-cy.sc	yat-cy.sc	eiotified-cy.sc	yuslittle-cy.sc
Ӧ	Ӧ	Ӧ	Ӹ	Ψ	Θ	Ƶ	ÿ	ΟΥ	Ɔ	Ђ	Ɔ	Ж	З
yuslittleiotified-cy.sc	yusbig-cy.sc	yusbigiotified-cy.sc	ksi-cy.sc	psi-cy.sc	fita-cy.sc	izhitsa-cy.sc	izhitsadblgrave-cy.sc	uk-cy.sc	ghestroke-cy.sc	ghemiddlehook-cy.sc	ghemiddlehook-cy.sc.loclBGR	zhedescender-cy.sc	zedescender-cy.sc

Unencoded Glyphs

Ɔ	Ɔ	Ɔ	Ɔ	Ɔ	Ɔ	Ɔ	Ɔ	Ɔ	Ɔ	Ɔ	Ɔ	Ɔ	Ɔ
kadescender-cy.sc	kavertikalstroke-cv.sc	kastroke-cy.sc	kabashkir-cy.sc	endescender-cy.sc	enghe-cy.sc	pedescender-cy.sc	pemiddlehook-cy.sc	pemiddlehook-cv.sc.loclBGR	haabkhasian-cy.sc	esdescender-cy.sc	tedescender-cy.sc	hadescender-cy.sc	chedescender-cy.sc
Ɔ	Ɔ	Ɔ	Ɔ	Ɔ	Ɔ	Ɔ	Ɔ	Ɔ	Ɔ	Ɔ	Ɔ	Ɔ	Ɔ
cheverticalstroke-cv.sc	enlefthook-cy.sc	dzzhe-cy.loclBGR.sc	dzzhe-cy.sc	dche-cy.loclBGR.sc	dche-cy.sc	eldescender-cv.loclBGR.sc	eldescender-cy.sc	shha-cy.sc	shhadescender-cy.sc	cheabkhasian-cy.sc	chedescenderabkhasian-cv.sc	palochka-cy.sc	zhebreve-cy.sc
Ɔ	Ɔ	Ɔ	Ɔ	Ɔ	Ɔ	Ɔ	Ɔ	Ɔ	Ɔ	Ɔ	Ɔ	Ɔ	Ɔ
kahook-cy.sc	eltail-cy.loclBGR.sc	eltail-cy.sc	enhook-cy.sc	entail-cy.sc	chekhakassian-cy.sc	emtail-cy.sc	abreve-cy.sc	adieresis-cy.sc	aie-cy.sc	iebreve-cy.sc	schwa-cy.sc	schwadieresis-cy.sc	zhedieresis-cy.sc
Ɔ	Ɔ	Ɔ	Ɔ	Ɔ	Ɔ	Ɔ	Ɔ	Ɔ	Ɔ	Ɔ	Ɔ	Ɔ	Ɔ
zedieresis-cy.sc	dzeabkhasian-cy.sc	imacron-cy.sc	idieresis-cy.sc	odieresis-cy.sc	obarred-cy.sc	obarreddieresis-cv.sc	edieresis-cy.sc	umacron-cy.sc	udieresis-cy.sc	uhungarumlaut-cy.sc	chedieresis-cy.sc	gedescender-cy.sc	yerudieresis-cy.sc
Ɔ	Ɔ	Ɔ	Ɔ	Ɔ	Ɔ	Ɔ	Ɔ	Ɔ	Ɔ	Ɔ	Ɔ	Ɔ	Ɔ
gestrokehook-cy.sc	gestrokehook-cv.sc.loclBGR	hahook-cy.sc	hahook-cy.sc.loclBGR	hastroke-cy.sc	komide-cy.sc	komidje-cy.sc	komizje-cy.sc	komidzje-cy.sc	komilje-cv.loclBGR.sc	komilje-cy.sc	kominje-cy.sc	komisje-cy.sc	komitje-cy.sc
Ɔ	Ɔ	Ɔ	Ɔ	Ɔ	Ɔ	Ɔ	Ɔ	Ɔ	Ɔ	Ɔ	Ɔ	Ɔ	Ɔ
reversedze-cy.sc	elhook-cy.loclBGR.sc	elhook-cy.sc	lha-cy.loclBGR.sc	lha-cy.sc	rha-cy.sc	yae-cy.sc	qa-cy.sc	we-cy.sc	aleutka-cy.sc	elmiddlehook-cv.loclBGR.sc	elmiddlehook-cy.sc	enmiddlehook-cy.sc	semisoftsign-cy.sc
Ɔ	Ɔ	Ɔ	Ɔ	Ɔ	Ɔ	Ɔ	Ɔ	Ɔ	Ɔ	Ɔ	Ɔ	Ɔ	Ɔ
ertick-cy.sc	tsehelper-cy.sc	alpha.sc	beta.sc	gamma.sc	delta.sc	epsilon.sc	zeta.sc	eta.sc	theta.sc	iota.sc	kappa.sc	lambda.sc	mu.sc

Unencoded Glyphs

N nu.sc	Ξ xi.sc	Ο omicron.sc	Π pi.sc	Ρ rho.sc	Σ sigmafinal.sc	Σ sigma.sc	Τ tau.sc	Υ upsilon.sc	Φ phi.sc	Χ chi.sc	Ψ psi.sc	Ω omega.sc	Ι iotatonos.sc
ï iotadieresis.sc	ï iotadieresis-tonos.sc	Υ upsilon-tonos.sc	ÿ upsilondieresis.sc	ÿ upsilondieresis-tonos.sc	Ο omicron-tonos.sc	Ω omegatonos.sc	Α alphanos.sc	Ε epsilontonos.sc	Η etatonos.sc	Ϝ heta.sc	Ϛ archaicsampi.sc	ϛ pamphylidigamma.sc	Ϝ sigmaLunateReversedSmbol.sc
ϳ sigmaLunateDottedSymbol.sc	ϳ sigmaLunateDottedReversedSymbol.sc	Ϟ koppaArchaic.sc	Ϛ stigma.sc	Ϝ digamma.sc	Ϟ koppa.sc	Ϛ sampi.sc	ϛ kaisymbol.sc	Β betasymbol.sc	Θ thetaSymbol.sc	Υ UpsilonhookSymbol.sc	Υ UpsilonacutehookSymbol.sc	ÿ upsilondieresishooksymbol.sc	Ϝ phisymbol.sc
Π pisymbol.sc	Κ kappasymbol.sc	Ρ rhosymbol.sc	Ϛ sigmaLunateSymbol.sc	Ј yot.sc	ϳ epsilonLunateSymbol.sc	Ϟ sho.sc	Μ san.sc	Ϟ rhostrokesymbol.sc	Α alphasili.sc	Α alphadasia.sc	Α alphasilivaria.sc	Α alphadasiavaria.sc	Α alphasilioxia.sc
Α alphadasiaoxia.sc	Α alphasiliperispomeni.sc	Α alphadasiaiperispomeni.sc	Α alphavaria.sc	Α alphaoxia.sc	Α alphaperispomeni.sc	Α alphavrachy.sc	Α alphamacron.sc	Α alphapogegrameni.sc	Α alphavariapogegrameni.sc	Α alphaoxiapogegrameni.sc	Α alphasilipogegrameni.sc	Α alphadasiapogegrameni.sc	Α alphasilivariapogegrameni.sc
Α alphadasivariapogegrameni.sc	Α alphasilioxiapogegrameni.sc	Α alphadasiaoxiapogegrameni.sc	Α alphasiliperispomenivooeegrameni.sc	Α alphadasiaiperispomenivooeegrameni.sc	Α alphaperispomeniypogegrameni.sc	Ε epsilonpsili.sc	Ε epsilondasia.sc	Ε epsilonpsilivaria.sc	Ε epsilondasiavaria.sc	Ε epsilonpsilioxia.sc	Ε epsilondasiaoxia.sc	Ε epsilonvaria.sc	Ε epsilonoxia.sc
Η etapsili.sc	Η etadasia.sc	Η etapsilivaria.sc	Η etadasiavaria.sc	Η etapsilioxia.sc	Η etadasiaoxia.sc	Η etapsiliperispomeni.sc	Η etadasiaiperispomeni.sc	Η etavaria.sc	Η etaoxia.sc	Η etaperispomeni.sc	Η etapogegrameni.sc	Η etavariapogegrameni.sc	Η etaoxiapogegrameni.sc

Unencoded Glyphs

H	H	H	H	H	H	H	H	H	I	I	I	I	I
etapsiliypogegrammen i.sc	etadasiaypogegrammen i.sc	etapsilivariaypogegr ammeni.sc	etadasiavariaypogegr ammeni.sc	etapsilioxaiypogegra mmeni.sc	etadasiioxaiypogegra mmeni.sc	etapsiliperispomeniy pogegrammeni.sc	etadasiaperispomeniy pogegrammeni.sc	etaperispomeniypogeg rammeni.sc	iotapsili.sc	iotadasia.sc	iotapsilivaria.sc	iotadasiavaria.sc	iotapsilioxia.sc
I	I	I	I	I	I	I	I	I	I	I	O	O	O
iotadasiaoxia.sc	iotapsiliperispomeni .sc	iotadasiaaperispomeni .sc	iotavaria.sc	iotaoxia.sc	iotaperispomeni.sc	iotavrachy.sc	iotamacron.sc	iotadialytkavaria.s c	iotadialytkaoxia.sc	iotadialytkaperispo meni.sc	omicronpsili.sc	omicrondasia.sc	omicronpsilivaria.sc
O	O	O	O	O	P	P	Y	Y	Y	Y	Y	Y	Y
omicrondasivaria.sc	omicronpsilioxia.sc	omicrondasiaoxia.sc	omicronvaria.sc	omicronoxia.sc	rhopsili.sc	rhodasia.sc	upsilonpsili.sc	upsilondasia.sc	upsilonpsilivaria.sc	upsilondasivaria.sc	upsilonpsilioxia.sc	upsilondasiaoxia.sc	upsilonpsiliperispom eni.sc
Y	Y	Y	Y	Y	Y	Y	Y	Y	Ω	Ω	Ω	Ω	Ω
upsilondasiaaperispom eni.sc	upsilonvaria.sc	upsilonoxia.sc	upsilonperispomeni.s c	upsilonvrachy.sc	upsilonmacron.sc	upsilondialytkavari a.sc	upsilondialytkaoxia .sc	upsilondialytkaperi someni.sc	omegapsili.sc	omegadasia.sc	omegapsilivaria.sc	omegadasivaria.sc	omegapsilioxia.sc
Ω	Ω	Ω	Ω	Ω	Ω	Ω	Ω	Ω	Ω	Ω	Ω	Ω	Ω
omegadasiaoxia.sc	omegapsiliperispomen i.sc	omegadasiaaperispomen i.sc	omegavaria.sc	omegaoxia.sc	omegaperispomeni.sc	omegaypogegrammeni.s c	omegavariaypogegram eni.sc	omegaoxiaypogegrarme ni.sc	omegapsiliypogegram eni.sc	omegadasaiypogegram eni.sc	omegapsilivariaypogeg rammeni.sc	omegadasivariaypogeg rammeni.sc	omegapsilioxaiypogeg rammeni.sc
Ω	Ω	Ω	Ω	¨	·	˘	˙	˝	ˆ	˘	˘	◌	˜
omegadasiaoxaiypogeg rammeni.sc	omegapsiliperispomen ivooeerammeni.sc	omegadasiaaperispomen ivooeerammeni.sc	omegaperispomeniypog eerammeni.sc	dieresiscomb.sc	dotaccentcomb.sc	gravecomb.sc	acutecomb.sc	hungarumlautcomb.sc	circumflexcomb.sc	caroncomb.sc	brevecomb.sc	ringcomb.sc	tildecomb.sc
—	,	¸	¸	˙	˙	˙	˘	˘	ˆ	˘	ˆ	¨	·
macroncomb.sc	commaaccentcomb.sc	cedillacomb.sc	ogonekcomb.sc	acute.loclHUN.sc	acute.sc	acute.sc.loclPLK	breve.sc	caron.sc	cedilla.sc	cedilla.sc.ALT	circumflex.sc	dieresis.sc	dotaccent.sc

Unencoded Glyphs



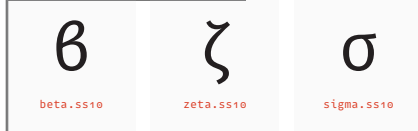
Smallcaps Ligatures



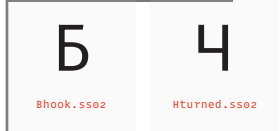
Stylistic Set 1



Stylistic Set 10



Stylistic Set 2



Stylistic Set 3



Stylistic Set 4



Unencoded Glyphs

Stylistic Set 5

g

g.ss05

Tabular

0

zero.tf

1

one.tf

2

two.tf

3

three.tf

4

four.tf

5

five.tf

6

six.tf

7

seven.tf

8

eight.tf

9

nine.tf

#

numbersign.tf

—

figuredash.tf

₮

baht.tf

₺

cent.tf

₯

colonsign.tf

₴

currency.tf

\$

dollar.tf

₫

dong.tf

₯

drachma.tf

€

euro.tf

₴

hryvnia.tf

₺

liraTurkish.tf

₦

naira.tf

₹

ruble.tf

₹

rupeeIndian.tf

₪

sheqel.tf

£

sterling.tf

₩

won.tf

¥

yen.tf

+

plus.tf

-

minus.tf

×

multiply.tf

÷

divide.tf

=

equal.tf

≠

notequal.tf

>

greater.tf

<

less.tf

≥

greaterequal.tf

≤

lessequal.tf

±

plusminus.tf

≈

approxequal.tf

~

asciitilde.tf

¬

logicalnot.tf

∞

infinity.tf

∫

integral.tf

∏

product.tf

∑

summation.tf

√

radical.tf

∂

partialdiff.tf

%

percent.tf

‰

perthousand.tf

◊

lozenge.tf

§

section.tf

°

degree.tf

†

dagger.tf

‡

daggerdbl.tf